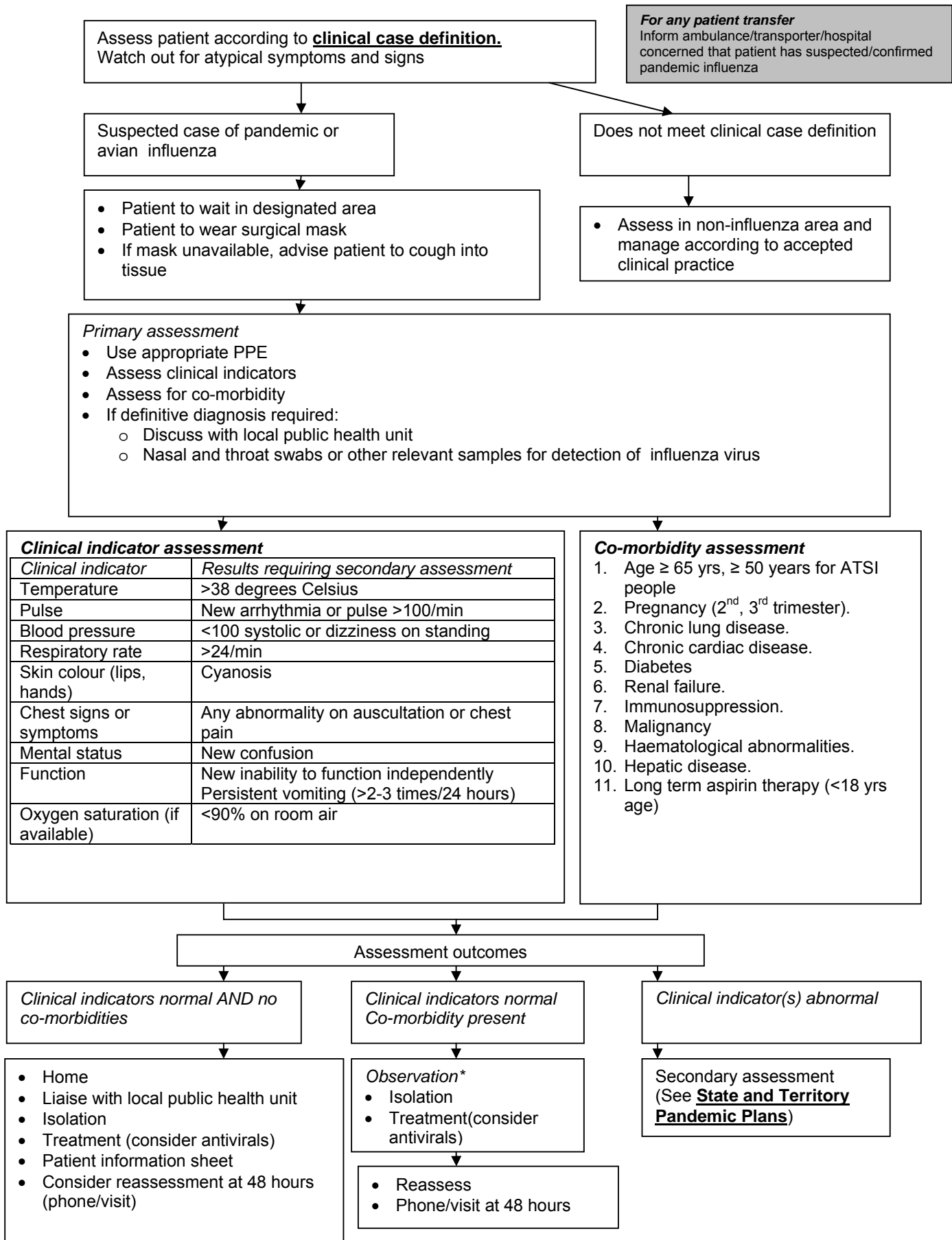
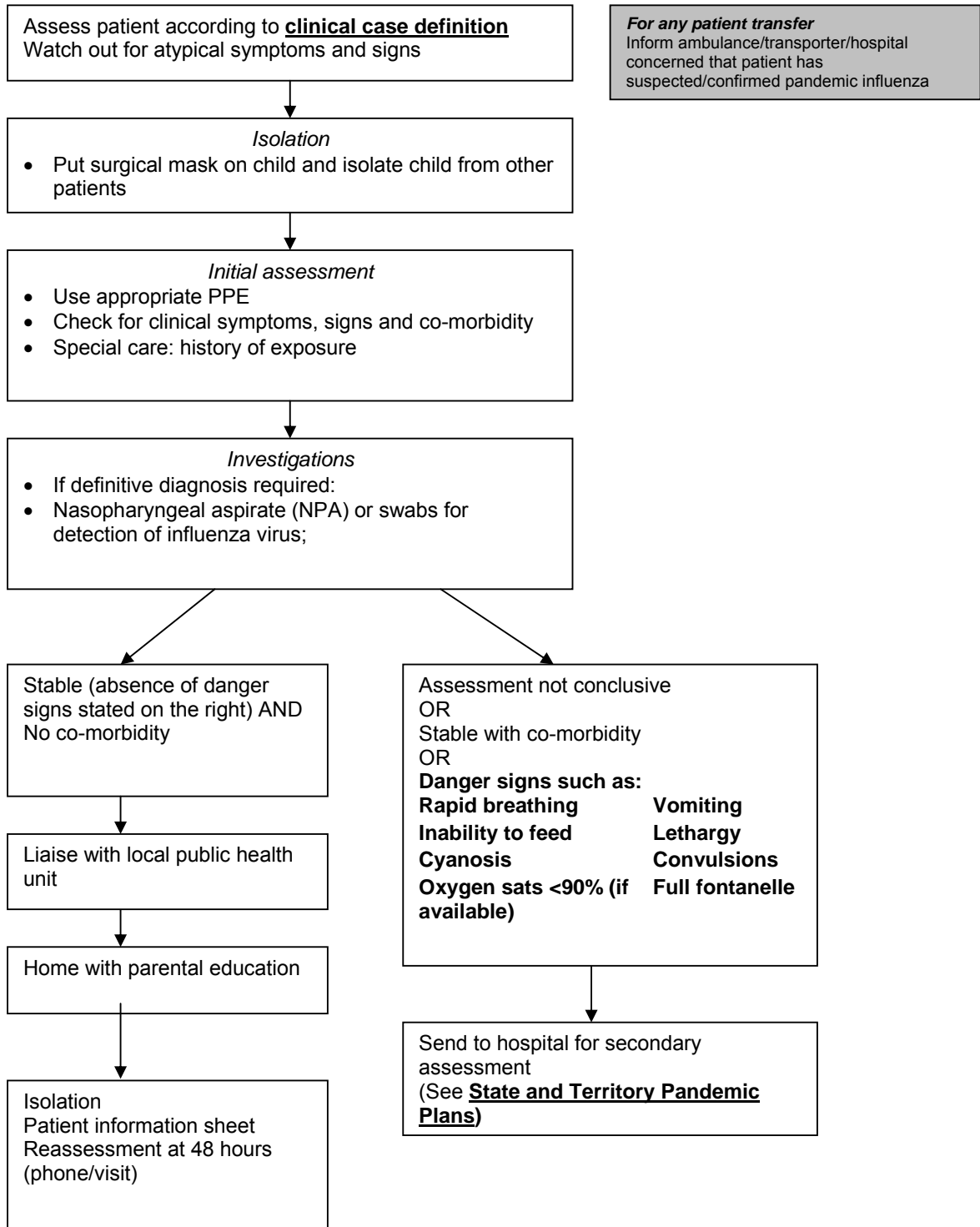


ALGORITHM 1 -Guidelines for primary assessment of adults



ALGORITHM 2- Guidelines for primary assessment of children



For any patient transfer
Inform ambulance/transporter/hospital concerned that patient has suspected/confirmed pandemic influenza

¹ Fever and sudden cough is commonest presentation in children, but infants may have no cough and may present with apnoea, poor feeding and fever or hypothermia. Current Case Definition may change.
² Congenital heart disease, suppurative lung disease, immune deficiency, chronic conditions e.g., diabetes, metabolic disease, long term aspirin therapy